

8 Troubleshooting Continued

| PROBLEM | POSSIBLE CAUSE | SUGGESTED SOLUTION |
|--|---|--|
| If you have checked your batteries and your Door Chime is still not operating. | Check the distance between your Door Chime and Bell Press, they may be located too far away from each other | Relocate the Door Chime Receiver closer to the Bell Press |
| | Your Bell Press may be located too close to a metal structure or too close to the ground | Relocate your Bell Press away from the metal structure or further away from the ground |
| Selected chime has changed. | Battery in a Bell Press unit was replaced | Refer to "tone selection" |

9 Maintenance

The following suggestions will help you care for the Door Chime.

1. Keep the Door Chime dry. If the Door Chime gets wet, wipe it dry immediately. Liquids might contain minerals that can corrode the electronic circuits. 2. Use and store the Door Chime only in normal temperature environments. Temperature extremes can shorten the life of electronic devices, damage batteries and distort or melt plastic parts. 3. Handle the Door Chime gently and carefully. Dropping it can damage the circuit boards and can cause the Door Chime to work improperly. 4. Keep the Door Chime away from dust or dirt, which can cause premature wear of parts. 5. Wipe the Door Chime with a damp cloth occasionally to keep it looking new. Do not use harsh chemicals, cleaning solvents, or strong detergents to clean the chime. 6. Use only fresh batteries of the recommended size and type. Always remove old or weak batteries. They can leak chemicals that can destroy electronic circuits. 7. Modifying or tampering with the Door Chime's internal components can cause a malfunction and might invalidate its warranty.

10 Warning

1. Ensure the device's battery compartment is secured with a screw provided. 2. Do not use if the battery compartment is not secure. 3. Dispose of used button/coin batteries immediately by placing sticky tape around both sides of the battery and dispose of it immediately in an outside bin, out of reach of children, or recycle safely.



WARNING

THIS PRODUCT CONTAINS A COIN BATTERY
If swallowed, a lithium coin battery can cause severe or fatal injuries within 2 hours. Keep batteries out of reach of children. If you think batteries may have been swallowed or placed inside any part of the body, seek medical attention immediately.

Warranty

Legrand warrants this product for a period of 3 years from the date of purchase.

These goods come with guarantees that cannot be excluded under the Australian and New Zealand Consumer Laws. You are entitled to a replacement or a refund for a major failure and for compensation for any other reasonably foreseeable loss or damage. You are also entitled to have the goods repaired if the goods fail to be of acceptable quality and the failure does not amount to a major failure.

See the Warranty card enclosed with this product for further details.

Customer Service

For all Customer Service and Technical Support please call Monday to Friday during business hours.

Legrand Australia
1300 369 777
www.hpm.com.au

Legrand New Zealand
0800 476 009
www.hpm.co.nz

ABN: 31 000 102 661



09/2022

LE11450A/C



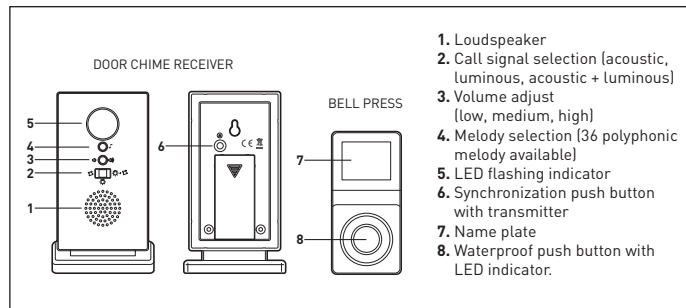
A brand of **legrand**

Wireless Door Chime

Battery Operated
Cat. no. D642/L1
Instruction Manual

HPM door chimes provide an easy and convenient solution for letting you know when you have someone calling at your door, they are "Neighbour friendly". By this we mean false triggering or interference is prevented - every door chime and bell press pair is factory preset to communicate on one of 19,000 unique channels.

Please read all instructions carefully before installation and use.



1. Loudspeaker
2. Call signal selection (acoustic, luminous, acoustic + luminous)
3. Volume adjust (low, medium, high)
4. Melody selection (36 polyphonic melody available)
5. LED flashing indicator
6. Synchronisation push button with transmitter
7. Name plate
8. Waterproof push button with LED indicator.

Specifications:

Digital coded technology
Transmitter operating voltage: 3 V d.c.
Transmitter frequency: 433 MHz
Bell press weatherproof rating: IP44
Receiver operating voltage: 3 V d.c.

This Chime and Bell Press are a factory set pair and are not interchangeable with other units from HPM's D642 or D641 series of door chimes.

Battery requirement:

- Battery for transmitter: 1 x 3 V CR2032 lithium battery (included)
 - Battery for receiver: 2 x "AA" 1.5 V (not included)
- Do not use rechargeable batteries

Box contents:

- 1 x Bell press with 3 V battery
- 1 x Door chime receiver
- 2 x Screw and 2 x wall plugs
- 1 x Double-sided tape
- 1 x Door chime deck

1 Features

- Battery operated / wireless operation
- Range 100m in open air
- Flashing light for the hearing impaired
- 36 melodies
- Adjustable volume
- Name tag insert
- Slimline
- Easy to install - no wires or cables
- No signal interference for neighbours
- Can be used as a door bell or panic switch
- Synchronisation button permits up to 4 bell press to be paired with 1 receiver

2 Typical Applications

- Visitor alert
- Panic button
- Pager

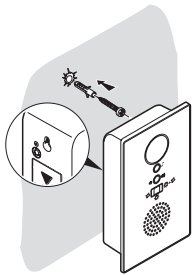
3 Before Installation

Step 1: Test the location of both units to ensure satisfactory operation before permanently fixing either unit in place.

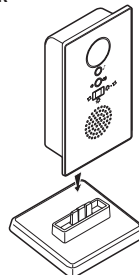
Step 2: Do not mount the Bell Press transmitter on metal or near a metal door frame, security door or in close proximity to any metal outdoor furniture. The range of the unit may be substantially reduced.

4 Installation

DOOR CHIME RECEIVER

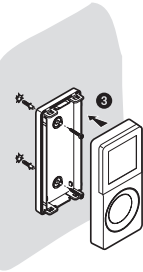
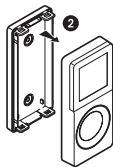
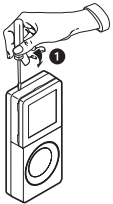


Wall mounted



On Base

BELL PRESS TRANSMITTER



Wall mounted



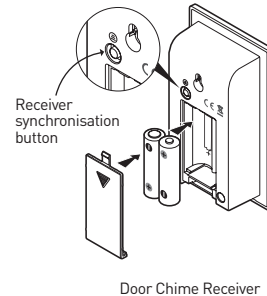
With double sided tape

5 Door Chime Operation

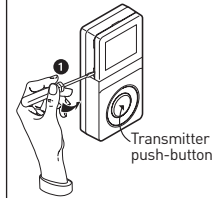
Step 1: If using first time, pull out the plastic film to activate the battery. Press the button on the Bell Press Transmitter. The Door Chime will sound and the indicator light on the chime unit will flash.

6 Operating Instructions

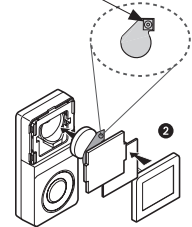
BATTERY REPLACEMENT



Door Chime Receiver



Battery cover must be fixed using screw as shown.



Bell Press Transmitter

Pairing: To pair a transmitter with a receiver, press the synchronisation button on the receiver at the same time as the push-button on the transmitter you want to link with.

7 Important Notes Before First Time Use

1. Do not use rechargeable batteries, do not mix old and new batteries or different types. Alkaline batteries are recommended for a longer operating life.
2. The operation and range of your Wireless Door Chime depends on location, temperature and battery condition.
3. Do not expose the chime unit to rain or immerse either unit in water.
4. Avoid locations where the Bell Press Transmitter is exposed to direct summer sunlight.
5. Do not leave exhausted batteries in Door Chime Receiver or Bell Press Transmitter.
6. Clean only with a damp cloth and mild detergent. Do not use solvents.

8 Troubleshooting

| PROBLEM | POSSIBLE CAUSE | SUGGESTED SOLUTION |
|--|---|---|
| The Door Chime has stopped sounding | Your Door Chime Receiver batteries may be flat | Replace the batteries in your Door Chime Receiver with 2 x AA batteries |
| | If the red indicator light on the Bell Press Transmitter is no longer illuminated then your transmitter battery is flat | Replace your Bell Press Transmitter battery (1 x 3 V CR2032) |
| | Units are out of range (max. range 100 metres) | Operate the chime unit with the right range |
| | Wrong polarity of battery in either unit | Re-insert battery with polarity to match markings |